

CHAPTER 4 ENVIRONMENTAL CONTEXT

4.1 Introduction

4.1.1 This chapter sets down the environmental context and unique location within which the proposal for An Camas Mòr has been progressed.

4.2 The Site

4.2.1 An Camas Mòr is situated within the 10,000 ha Rothimurchus Estate which lies within the Cairngorms National Park and the Cairngorm Mountains National Scenic Area. The Estate is important in cultural and natural heritage terms and also as a place to live and work. It is of importance to the whole of the Badenoch & Strathspey area because of the visitors it attracts, the employment it provides and the contribution it makes to local community life. The continued sustainable development of The Estate is, therefore, important in securing long term public benefit.



Figure 4.1 Craigellachie- View of the site (blue dots) looking east (circa March 2004)



Figure 4.2 General view looking west (circa March 2004)

- 4.2.2** The Estate and the need for its sustainability is formally recognised in a “Concordat” with the Scottish Executive, The Highland Council, and other agencies with legal responsibilities for the area. The concordat describes it as: “...a privately owned family Estate which, although operated on business principles, benefits from very considerable public, local and staff goodwill and commitment. With public sector support, the staff have developed a mission to conserve the Estate’s cultural, natural, historic and field sporting interests at the same time as creating a quality environment for people to make their living to promote efficient and careful land use and to enable visitors to enjoy and appreciate Rothiemurchus.”
- 4.2.3** An Camas Mòr is situated in a discreet location separated from the existing ‘developed’ areas of the Estate by woodlands, existing public roads and the River Druie. Four houses, the Dell farm complex, and the Estate’s fish farm lie adjacent to An Camas Mòr but are separated by woodlands and farmland. The area is currently not used for public recreation.
- 4.2.4** An Camas Mòr lies on a slightly convex raised area of land on a terrace above and to the east of the River Spey. It extends to 105.4 ha of gently undulating ground made of glacial moraine covered with open moor, regenerating and plantation woodland, positioned between the B970 Coylumbridge to Boat of Garten road and the River Spey. From the site, to the east and west there are distant views of the Cairngorms and the Monadhliath, and to north and south views up and down the Spey valley.



Figure 4.3 View from B970 looking south west (circa March 2004)

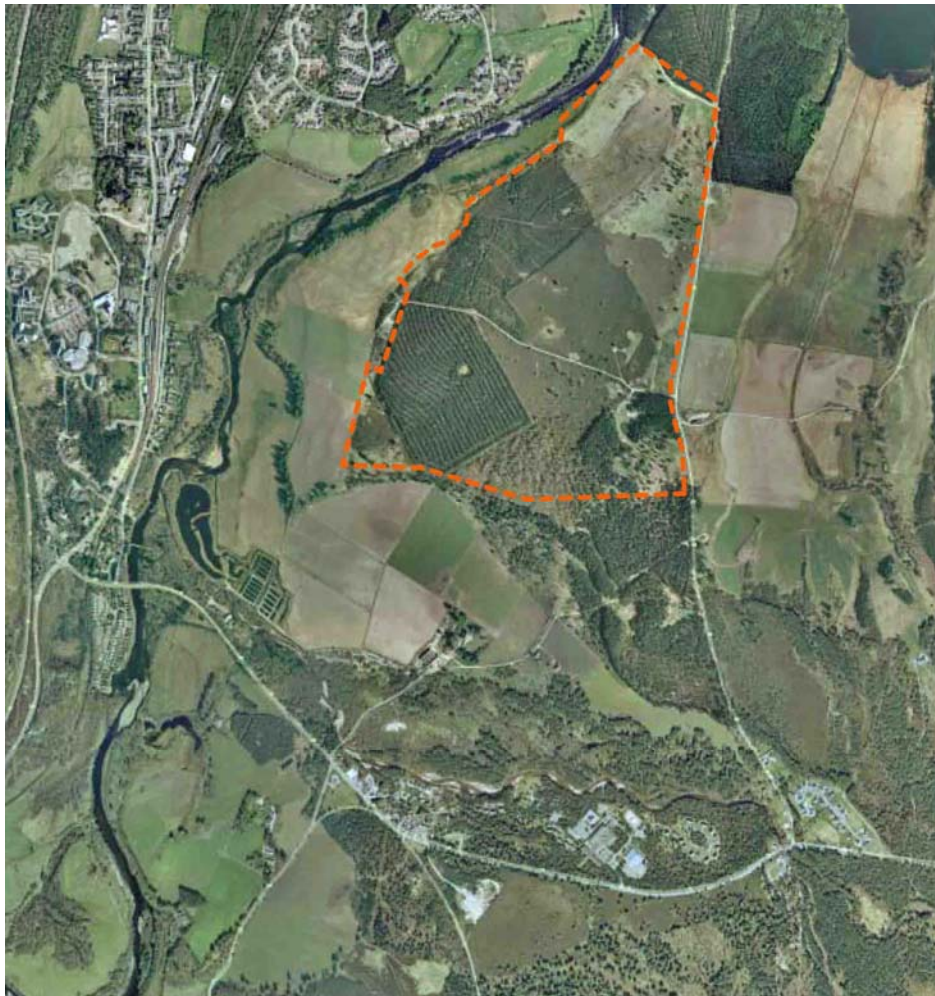


Figure 4.4 Aerial Photograph of the site and surrounding areas (2005)