

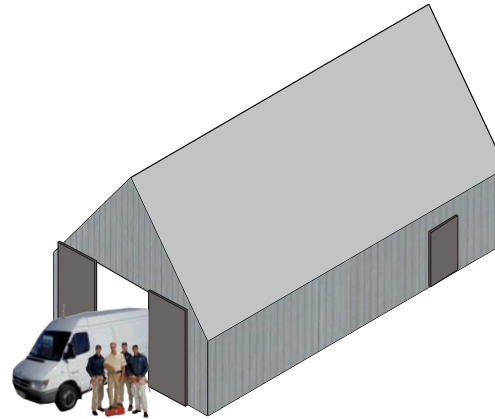
MEDIUM DENSITY WORKSHOPS

Certain business activities would require larger spaces and greater flexibility than that offered by the ground floor of the apartment buildings. There might be some manufacturing involved, or a requirement for greater ceiling height, or there might just be a need for cheaper premises.

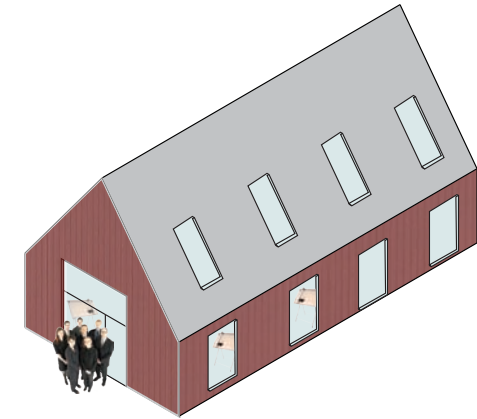
Large sheds, reminiscent to barns and buildings typical for the backlands of Scottish towns, could be very economical buildings, built of timber with tin roofs.

The scale is appropriate to domestic surroundings, as they have a low eaves height despite containing a large volume inside.

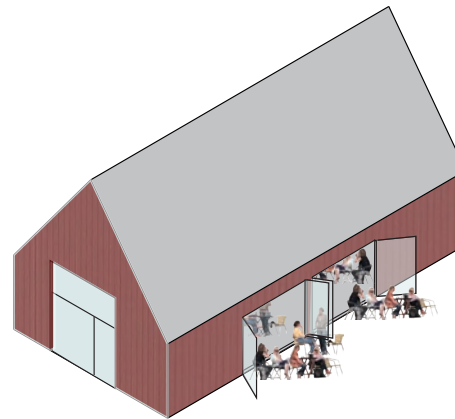
These buildings could accommodate open-plan office space, light manufacturing, restaurants or larger retail.



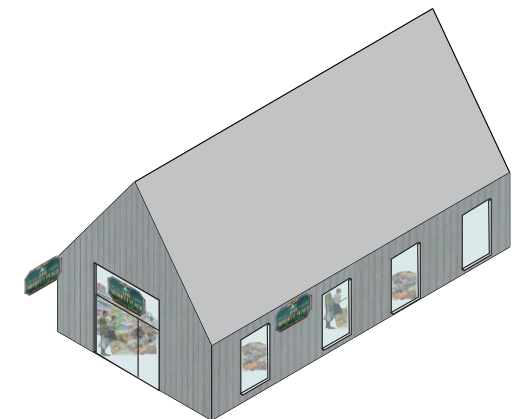
Workshop



Office



Restaurant



Shop